

Simons Voss
technologies

Digital Locking Systems for Educational Facilities

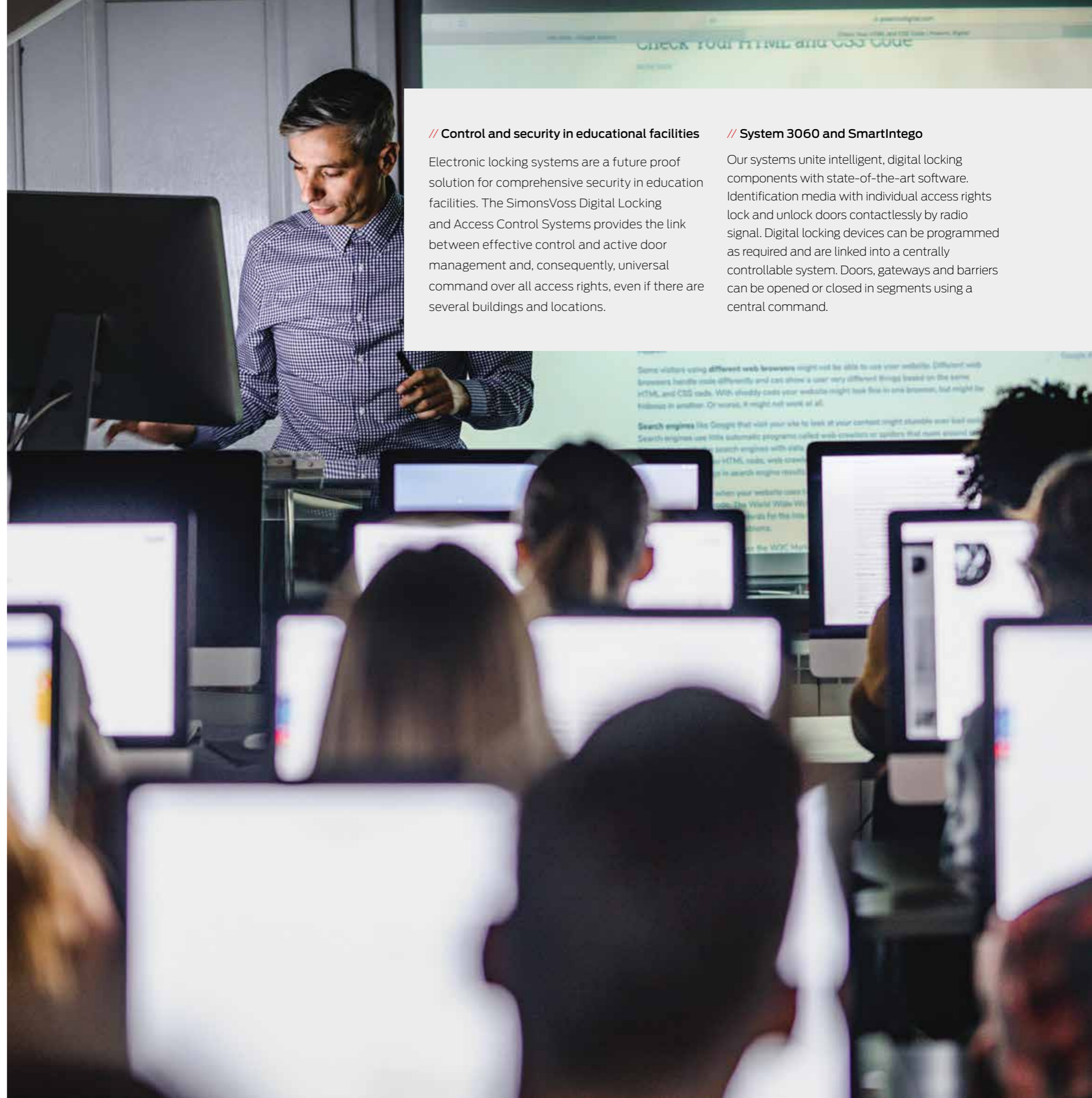


ABOUT SIMONSVOSS

We aim to make your life and working environment safer, more convenient and cost-effective. To achieve this, we have revolutionised conventional mechanical locking systems using digital technology and integrated access control functions.

Our idea of using a digital transponder or smart card instead of a conventional key has spread worldwide. We have consistently and successfully implemented this vision based on the wireless, cable-free locking and Access Control System. SimonsVoss have installed more than 11,500 systems around the world, expanding our vision into reality.

Based in Germany, all of the technology is German made and engineered with the philosophy of creating a keyless world using one system platform that's simple to install, operate and provides maximum security.



// Control and security in educational facilities

Electronic locking systems are a future proof solution for comprehensive security in education facilities. The SimonsVoss Digital Locking and Access Control Systems provides the link between effective control and active door management and, consequently, universal command over all access rights, even if there are several buildings and locations.

// System 3060 and SmartIntego

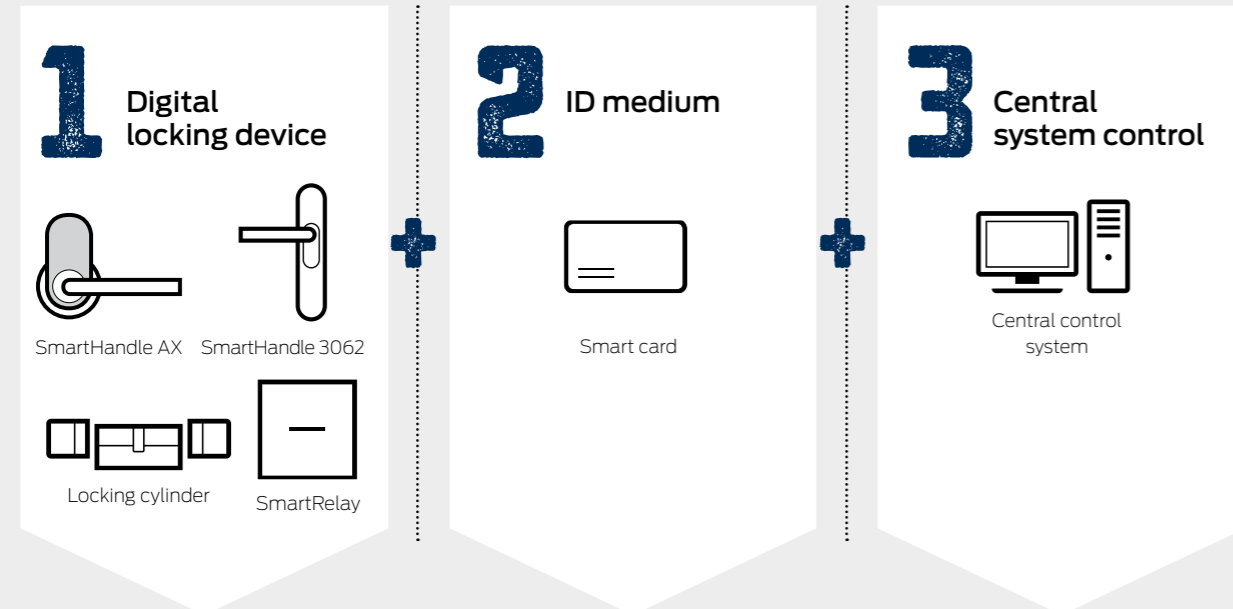
Our systems unite intelligent, digital locking components with state-of-the-art software. Identification media with individual access rights lock and unlock doors contactlessly by radio signal. Digital locking devices can be programmed as required and are linked into a centrally controllable system. Doors, gateways and barriers can be opened or closed in segments using a central command.

ACCESS MANAGEMENT FOR EDUCATIONAL FACILITIES

THE KEY FUNCTIONS, COMPONENTS AND OPERATION VARIANTS

Schools and universities need intelligent locking systems to ensure security for people, buildings and resources. Many visitors, students, staff and service providers come and go on a daily basis. Restricted doors and areas must be monitored while others need to be freely accessible. The different use of rooms for activities such as after-hours teaching, lectures and private hire, create challenges for controlling access. SimonsVoss technology offers numerous solutions for such central verification and protection requirements especially for educational facilities.

HOW DIGITAL OPENING AND LOCKING WORK



All the intelligence is focused in the digital locking device. It knows each and every access, authorised person, and performs all monitoring and control function for the door concerned.

Smart cards contain their owner's complete access rights. An identification signal is all that is needed to open and close the door in question.

Access rights are controlled centrally using the locking system management software and transmitted to digital locking devices and identification media.

// Locking cylinder, SmartHandle and SmartRelay

For intelligent opening, including time zone control, access control and access logging. Locking cylinders and SmartHandles can be combined with the DoorMonitoring function. SmartRelay provides access control without a locking cylinder and can also operate third-party systems. SimonsVoss technology integrates all lockable elements into an all-inclusive digital solution: from doors, gateways and lifts through to turnstiles, barriers and drawers.

// Identification media SmartCard

SmartCard (passive technology) take the place of mechanical keys and save the user's current access rights. The advantages are the identification medium can be deactivated immediately if lost and individual access rights can be changed at any time.

// Central control of the locking system

The Locking System Management software (LSM) is used to carry out all tasks for setting up, operating and managing digital locking systems. LSM is available in different editions to meet your facility security requirements.

// Offline and online operation

SimonsVoss systems can be operated offline, online or virtually networked. In online mode, all functions and changes to access rights are performed centrally in LSM and in real time over the network. There is no need for locking devices to be programmed at their location. Online mode provides optimum convenience and maximum security. Incidentally, offline systems can also be networked to become online systems at a later date at any time.

In a virtual network, changes to access rights and other information are transmitted to identification media via conveniently located gateways and are then distributed to the locking devices.

// Protection against unauthorised access

SimonsVoss locking and control components are an important security measure to stop unauthorised access and meet security requirements. This is particularly the case with functions such as automatically generated access event logs and online door monitoring (DoorMonitoring).



Locking cylinder



SmartHandle 3062 for exterior doors



SmartHandle AX for interiors



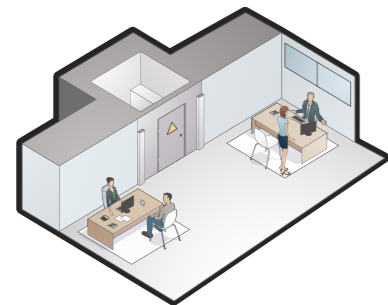
Smart card



SmartRelay

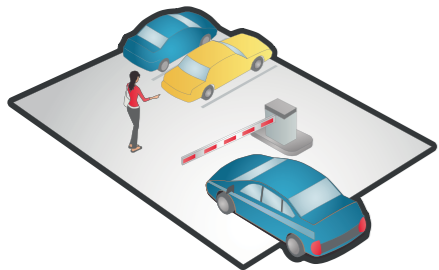
SOLUTIONS FOR YOUR FACILITY

With large numbers of visitors, students, staff and service providers, educational facilities are never quiet. It's a highly complex task to control such activity, protect restricted areas against unauthorised access and manage access zones and times safely. There's also the difficult balance between the required protection for people, equipment and property, along with the freedom of movement for staff, students and visitors.



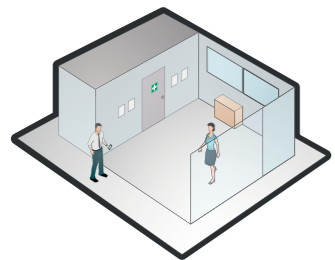
DOOR WITH DOOR MONITORING

Cable-free online door monitoring for restricted rooms. Records, logs reports all door statuses using sensor control to detect whether doors are open, closed, locked or open too long. It also sends an alert for critical events.



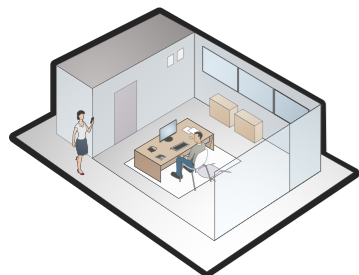
BARRIERS

Access rights issued for car parks and underground garages at a simple press of the mouse. Can be combined with existing ticket systems.



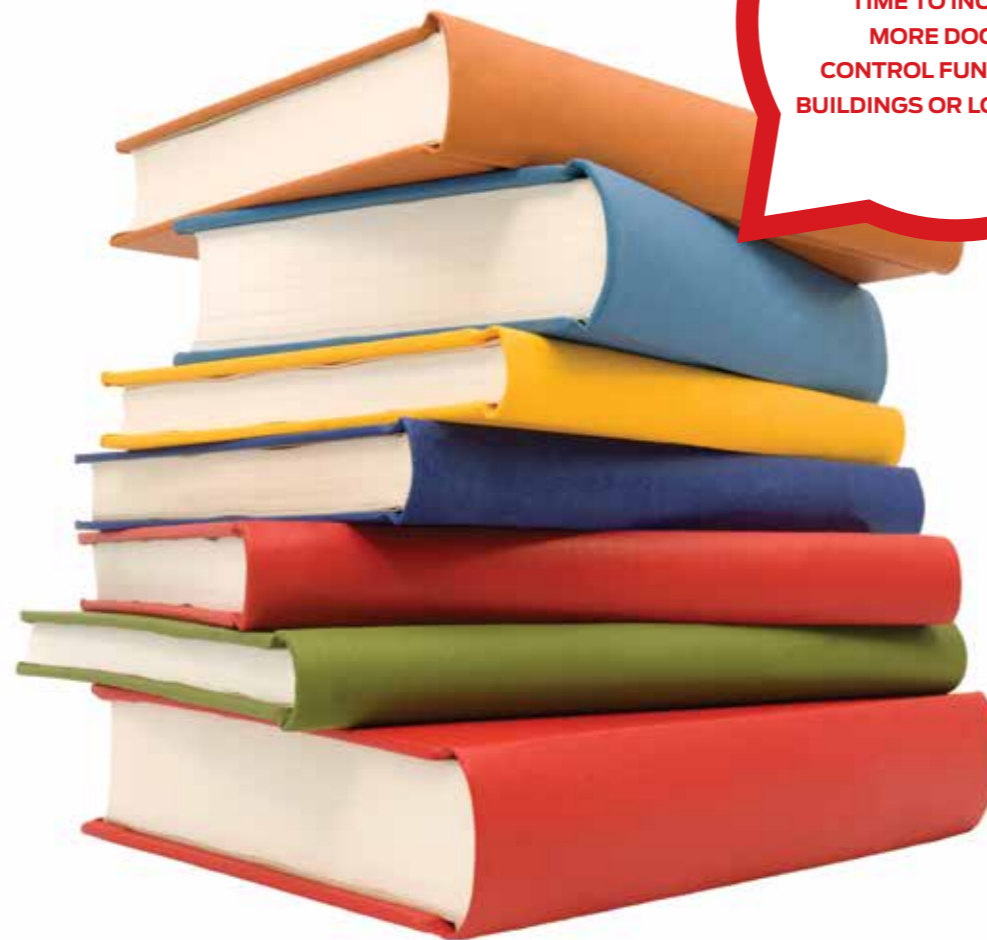
CONFIDENTIAL FILES AND CABINETS

Access or entry with an authorised identification medium only. Cabinets, cupboards and drawers are fitted with a half cylinder.



FACILITY MANAGEMENT

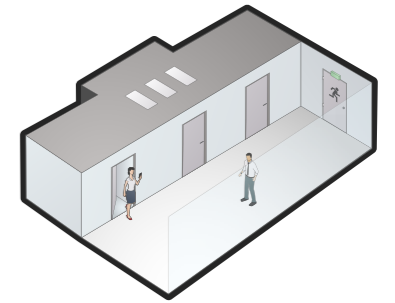
All system components are easily set up and managed centrally with the LSM software, even when there are several buildings and locations.



EXTEND DIGITAL PROTECTION AT ANY TIME TO INCLUDE MORE DOORS, CONTROL FUNCTIONS, BUILDINGS OR LOCATIONS.

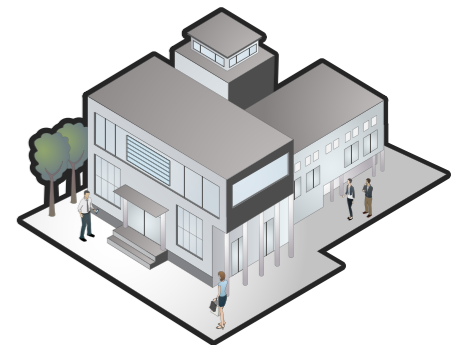
ENTRANCE HALL WITH PROTECT FUNCTION

Central opening or locking of doors in emergencies such as fire or security threats.



MAIN AND SIDE ENTRANCES

Programmable, automatic opening times and personalised access rights, for outside of opening hours.



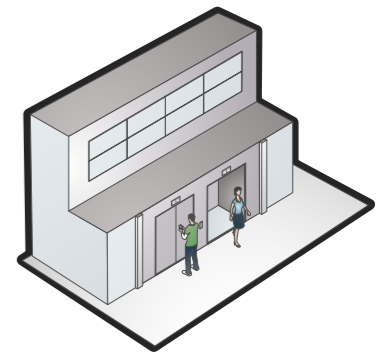
ONLINE OR VIRTUAL NETWORKING

Either online networking of locking devices: changes to access rights and functions performed in real time. Or virtual network: distribution of modified access rights to identification media via gateways.



LIFTS

Personalised access rights for individual floors.



HOW CABLE FREE DOOR MONITORING WORKS

Cable-free door monitoring enables you to secure restricted areas such as after hours access rooms, staff rooms and science labs. Built-in sensors capture every door status and every change to the doors. The information is forwarded to the LSM system software via the wireless network, where it is displayed. Critical events trigger an instant alert with a pop up window or email.

About API Access & Security

API Access & Security is an Australian wide access and security solutions provider. For over 50 years API has been securing residential, commercial and government facilities around Australia. Whether you need keying systems, locks and hardware, life safety devices, CCTV, automatic doors, perimeter and barrier security systems, electronic locking systems or safes and vaults, API can package up a full access and security solution in one place, plus installation and maintenance options.

API Access & Security is an Allegion™ company

Distributed by API Access & Security

Phone 131 539

Email api.service@allegion.com



About Allegion™

Allegion (NYSE: ALLE) helps keep people safe where they live, work and visit. Allegion is pioneering safety as a provider of security solutions through more than 25 brands in more than 130 countries.

For more, visit allegion.com

